

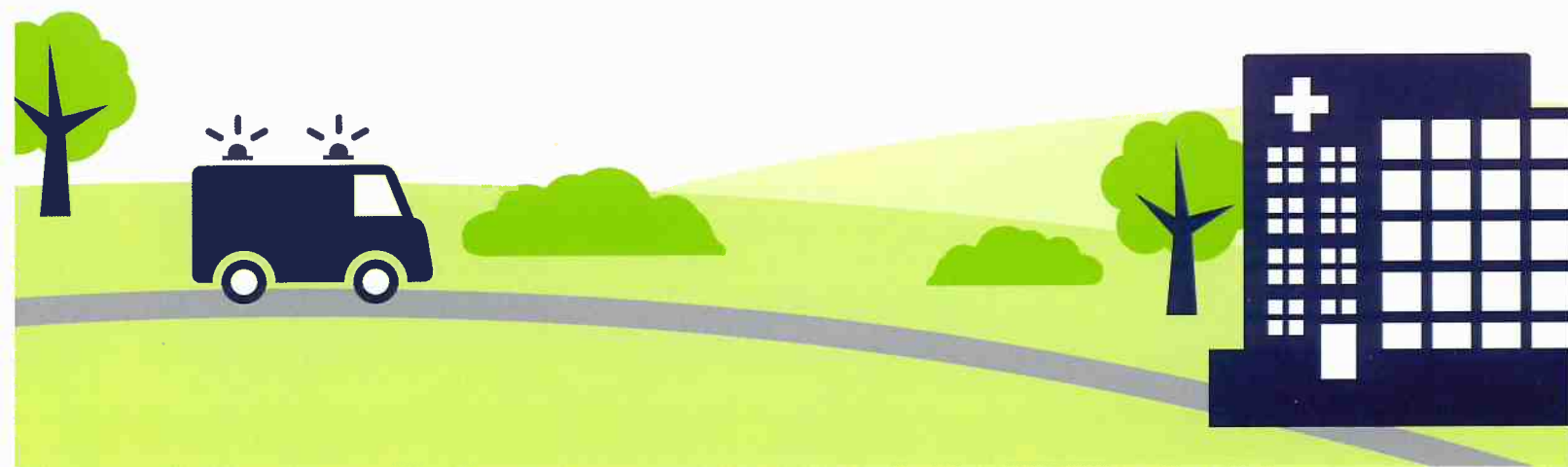
FACILITIES IN AND OUT OF NETWORK POST CONSENT DECREE.



Facility Access

Consent Decree In-Network Access Ends on 6/30/2019

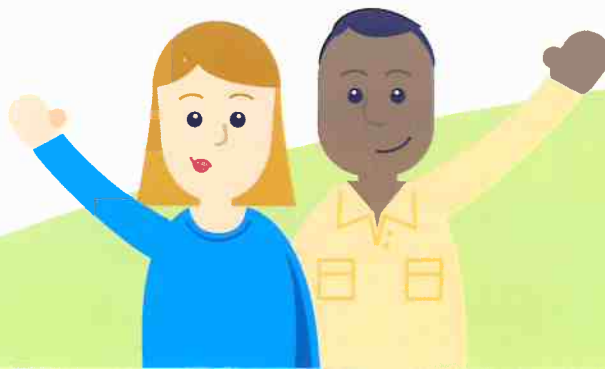
Provider	City	County
Magee-Women's Hospital of UPMC	Pittsburgh	Allegheny
UPMC East	Monroeville	Allegheny
UPMC Hamot	Erie	Erie
UPMC Hillman Cancer Center at UPMC Shadyside	Pittsburgh	Allegheny
UPMC McKeesport	McKeesport	Allegheny
UPMC Mercy	Pittsburgh	Allegheny
UPMC Montefiore	Pittsburgh	Allegheny
UPMC Passavant	Pittsburgh	Allegheny
UPMC Presbyterian	Pittsburgh	Allegheny
UPMC St. Margaret	Pittsburgh	Allegheny
UPMC Shadyside	Pittsburgh	Allegheny



Facility Access

In-Network Access Continues on 7/1/2019

Provider	City	County
Allegheny General Hospital	Pittsburgh	Allegheny
Allegheny Valley Hospital	Pittsburgh	Allegheny
Armstrong County Memorial Hospital (ACMH)	Kittanning	Armstrong
Barnes Kasson County Hospital	Susquehanna	Susquehanna
Berwick Hospital Center	Berwick	Columbia
Bradford Regional Medical Center	Bradford	McKean
Bucktail Medical Center	Renovo	Clinton
Butler Memorial Hospital	Butler	Butler
Canonsburg Hospital	Canonsburg	Washington
Chambersburg Hospital	Chambersburg	Franklin
Chan Soon-Shiong Medical Center at Windber	Windber	Somerset
Children's Hospital of Pittsburgh of UPMC	Pittsburgh	Allegheny
Clarion Hospital	Clarion	Clarion
Conemaugh Memorial Medical Center	Johnstown	Cambria
Conemaugh Meyersdale Medical Center	Meyersdale	Somerset
Conemaugh Miners Medical Center	Hastings	Cambria
Conemaugh Nason Medical Center	Roaring Spring	Blair
Coordinated Health – Allentown	Allentown	Lehigh
Coordinated Health – Bethlehem Hospital	Bethlehem	Northampton
Corry Memorial Hospital	Corry	Erie
Easton Hospital	Easton	Northampton
Ellwood City Hospital	Ellwood City	Lawrence
Endless Mountains Health Systems	Montrose	Susquehanna
Evangelical Community Hospital	Lewisburg	Union
Excelsa Health Frick Hospital	Mt. Pleasant	Westmoreland
Excelsa Health Latrobe Hospital	Latrobe	Westmoreland
Excelsa Health Westmoreland Hospital	Greensburg	Westmoreland
Forbes Hospital	Monroeville	Allegheny



Facility Access

In-Network Access Continues on 7/1/2019

Provider	City	County
Fulton County Medical Center	McConnellsburg	Fulton
Geisinger Bloomsburg Hospital	Bloomsburg	Columbia
Geisinger Community Medical Center	Scranton	Lackawanna
Geisinger Holy Spirit	Camp Hill	Cumberland
Geisinger Jersey Shore Hospital	Jersey Shore	Lycoming
Geisinger Lewistown Hospital	Lewistown	Mifflin
Geisinger Medical Center	Danville	Montour
Geisinger Shamokin Area Community Hospital	Coal Township	Northumberland
Geisinger South Wilkes-Barre	Wilkes-Barre	Luzerne
Geisinger Wyoming Valley Medical Center	Wilkes-Barre	Luzerne
Grove City Medical Center	Grove City	Mercer
Guthrie Robert Packer Hospital	Sayre	Bradford
Guthrie Towanda Memorial Hospital	Towanda	Bradford
Guthrie Troy Community Hospital	Troy	Bradford
Heritage Valley Beaver	Beaver	Beaver
Heritage Valley Sewickley	Sewickley	Allegheny
Highlands Hospital	Connellsville	Fayette
Indiana Regional Medical Center	Indiana	Indiana
Jefferson Hospital	Jefferson Hills	Allegheny
J.C. Blair Memorial Hospital	Huntington	Huntington
Lancaster General Hospital	Lancaster	Lancaster
Lehigh Valley Hospital	Allentown	Lehigh
Lehigh Valley Hospital – Hazleton	Hazleton	Luzerne
Lehigh Valley Hospital – Muhlenberg	Bethlehem	Northampton
Lehigh Valley Hospital – Pocono	East Stroudsburg	Monroe
Lehigh Valley Hospital – Schuylkill	Pottsville	Schuylkill
Lehigh Valley Hospital – Schuylkill Medical Center	Pottsville	Schuylkill
Meadville Medical Center	Meadville	Crawford
Millcreek Community Hospital	Erie	Erie
Monongahela Valley Hospital	Monongahela	Washington
Moses Taylor Hospital	Scranton	Lackawanna
Mount Nittany Medical Center	State College	Centre
Ohio Valley Hospital	McKees Rocks	Allegheny
Penn Highlands Brookville	Brookville	Jefferson
Penn Highlands Clearfield	Clearfield	Clearfield
Penn Highlands DuBois	DuBois	Clearfield

Facility Access

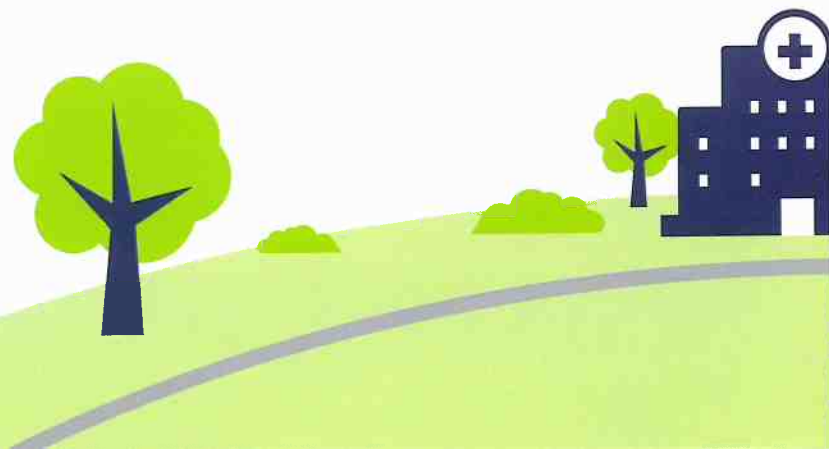
In-Network Access Continues on 7/1/2019

Provider	City	County
Penn Highlands Elk	St. Mary's	Elk
Penn State Health Milton S. Hershey Medical Center	Hershey	Dauphin
Punxsutawney Area Hospital	Punxsutawney	Jefferson
Reading Hospital	Reading	Berks
Regional Hospital of Scranton	Scranton	Lackawanna
Sharon Regional Health System (Sharon Regional Medical Center)	Sharon	Mercer
Somerset Hospital	Somerset	Somerset
St. Clair Hospital	Pittsburgh	Allegheny
St. Joseph Medical Center	Reading	Berks
St. Luke's Hospital – Allentown Campus	Allentown	Lehigh
St. Luke's Hospital – Anderson Campus	Easton	Northampton
St. Luke's Hospital – Gnadent Huetten Campus	Lehighton	Carbon
St. Luke's Hospital – Monroe Campus	Stroudsburg	Monroe
St. Luke's Hospital – Palmerton Campus	Palmerton	Carbon
St. Luke's Hospital – Sacred Heart Campus	Allentown	Lehigh
St. Luke's Miners Memorial Hospital	Coaldale	Schuylkill
St. Luke's University Hospital – Bethlehem	Bethlehem	Northampton
Saint Vincent Hospital	Erie	Erie
Titusville Area Hospital	Titusville	Crawford
Tyler Memorial Hospital	Tunkhannock	Wyoming
Tyrone Hospital	Tyrone	Blair
UPMC Altoona	Altoona	Blair
UPMC Bedford Memorial	Everett	Bedford
UPMC Cole	Coudersport	Potter
UPMC Horizon – Greenville	Greenville	Mercer
UPMC Horizon – Shenango Valley	Farrell	Mercer
UPMC Jameson	New Castle	Lawrence
UPMC Kane	Kane	McKean
UPMC Northwest	Seneca	Venango
UPMC Pinnacle Carlisle	Carlisle	Cumberland
UPMC Pinnacle Community Osteopathic	Harrisburg	Dauphin
UPMC Pinnacle Hanover	Hanover	York
UPMC Pinnacle Harrisburg	Harrisburg	Dauphin
UPMC Pinnacle Lancaster	Lancaster	Lancaster
UPMC Pinnacle Lititz	Lititz	Lancaster

Facility Access

In-Network Access Continues on 7/1/2019

Provider	City	County
UPMC Pinnacle Memorial	York	York
UPMC Pinnacle West Shore	Mechanicsburg	Cumberland
UPMC Susquehanna Lock Haven	Lock Haven	Clinton
UPMC Susquehanna Muncy	Muncy	Lycoming
UPMC Susquehanna Soldiers & Sailors Memorial Hospital	Wellsboro	Tioga
UPMC Susquehanna Sunbury	Sunbury	Northumberland
UPMC Susquehanna Williamsport Regional Medical Center	Williamsport	Lycoming
Uniontown Hospital	Uniontown	Fayette
Warren General Hospital	Warren	Warren
Washington Health System Greene	Waynesburg	Greene
Washington Hospital	Washington	Washington
Wayne Memorial Hospital	Honesdale	Wayne
Waynesboro Hospital	Waynesboro	Franklin
WellSpan Ephrata Community Hospital	Ephrata	Lancaster
WellSpan Gettysburg Hospital	Gettysburg	Adams
WellSpan Good Samaritan Hospital	Lebanon	Lebanon
WellSpan Surgery and Rehabilitation Hospital	York	York
WellSpan York Hospital	York	York
West Penn Hospital	Pittsburgh	Allegheny
Western Psychiatric Institute and Clinic of UPMC	Pittsburgh	Allegheny
Wilkes-Barre General Hospital	Wilkes-Barre	Luzerne



Cancer Centers Access

In-Network Access Continues on 7/1/2019

UPMC Cancer Centers	City	County
Arnold Palmer Cancer Center in Mt. View	Greensburg	Westmoreland
Arnold Palmer Medical Oncology in Mt. Pleasant	Mt. Pleasant	Westmoreland
Arnold Palmer Medical Oncology in Norwin	North Huntingdon	Westmoreland
Butler Health System Medical Oncology	Butler	Butler
Butler Health System Radiation Oncology	Butler	Butler
Children's Hospital of Pittsburgh	Pittsburgh	Allegheny
Grove City Medical Oncology	Grove City	Mercer
Heritage Valley Radiation Oncology in Beaver	Beaver	Beaver
Heritage Valley Radiation Oncology in Moon	Coraopolis	Allegheny
IRMC Cancer Center	Indiana	Indiana
Jameson Radiation Oncology	New Castle	Lawrence
John P. Murtha Regional Cancer Center	Johnstown	Cambria
The Regional Cancer Center	Erie	Erie
Uniontown Hospital Radiation Oncology	Uniontown	Fayette
UPMC Hillman - St. Clair Hospital Cancer Center	Pittsburgh	Allegheny
UPMC Hillman Cancer Center at John P. Murtha Regional Cancer Center	Johnstown	Cambria
UPMC Hillman Cancer Center at UPMC Altoona	Altoona	Blair
UPMC Hillman Cancer Center at UPMC Horizon	Farrell	Mercer
UPMC Hillman Cancer Center at UPMC Northwest	Seneca	Venango
UPMC Hillman Cancer Center in Beaver	Beaver	Beaver
UPMC Hillman Cancer Center in Coraopolis	Coraopolis	Allegheny
UPMC Hillman Cancer Center in Greenville	Greenville	Mercer
UPMC Hillman Cancer Center in New Castle	New Castle	Lawrence
UPMC Hillman Cancer Center in Uniontown	Uniontown	Fayette
UPMC Hillman Cancer Center in Washington	Washington	Washington
UPMC Hillman Cancer Center in Windber	Windber	Somerset
UPMC Hillman Cancer Center, part of UPMC Altoona	Altoona	Blair
Washington Health System Radiation Oncology	Washington	Washington

This document is applicable to Highmark Commercial products only and is not for external distribution. Facilities on this list are subject to change at any time. Legal, Provider Contracting, and Customer Alignment approval is still required when utilizing this information for any member or external facing materials.

UPMC Cancer Centers and Joint Venture Cancer Centers may only be covered at the standard level of benefits under a member's plan.



This brochure describes the network status of UPMC facility providers with respect to commercial members only (including individual members).

The Consent Decrees entered into by Highmark and UPMC ends on June 30, 2019; however, certain UPMC providers, including the UPMC hospitals and cancer centers (as indicated in this brochure), will be in-network providers for commercial members whose benefit agreements include such UPMC provider as in network.

© 2018 Highmark Inc. Confidential and Proprietary. The brochure is limited to members with commercial coverage. This information is subject to change and subject to the member's benefit agreement.

Highmark Blue Cross Blue Shield is an independent licensee of the Blue Cross and Blue Shield Association. 5/18 CS212426-MCC